



KBR  Koester de tijd
Protégeons le temps



KBR's Digital Data Strategy

Led by Julie M. Birkholz & Sally Chambers

In cooperation with Ann Van Camp, Brecht Deseure, Fien Messens, Frédéric Lemmers, Friedel Geeraert, Hannes Lowagie, Marie-Sophie Bercegeay, Nadège Isbergue, Piet Janssens, Sophie Vandepontseele, Sven Lieber, Tan Lu, Thuy-An Pham, Fran Stroobants, Daan van Heesch, Isabelle Gribomont

As librarians, collection managers, cultural heritage experts and researchers, we are constantly confronted with **information**. Not only how to make sense of it in the human mind! But also easily be able to reference, structure, organize and recall it with the help of computers.

What is **data**?

From the moment we have this information in a format that a computer can “read” we have data. Specifically **machine-readable data**.



KBR maintains lots of materials and **data** from analogue/source documents, digital objects or versions, born-digital objects, metadata on these objects, these collections as data (e.g. full-text, images), etc...

Each of these are different types of data, that have **specific** characteristics and are often maintained by **diverse** groups of experts, physically stored in **different** places and ways, and thus have different priorities, challenges and opportunities.

Challenge

The **increasing digitization of society** and resulting increased digitization of library collections results in KBR needing to develop processes to **manage** an insurmountable amount of diverse document and data types.

The challenge is to make these collections **accessible** not only for physical consultation but also digitally as images and increasingly as data. This shift for providing collections available in a machine readable format- or collections as data, demands **new** processes and practices.

From discussion to Action Plan

- Discussion started in December 2020 in identifying what is research data;
- It expanded to a cross-departmental working group to identify opportunities & threats; and weaknesses & strengths of all digital data
- Spring 2021 it became integrated into the strategic development plan of KBR for 2021 - 2024



**Objectif opérationnel KBR4.2. : Élaborer
et mettre en œuvre une stratégie de
données numériques
= digital data strategy**

KBR Digital Data Strategy

The KBR Digital Data Strategy outlines a proposal for how to manage the variety of this *data* (e.g. diverse formats needed for different document types).

This includes:

- the *volume* (e.g. increased computer storage demands to ensure accurate provenance and high level information on the source documents, digitized versions, and data),
- the *veracity* (e.g. ensuring quality and availability to users in new ways),
- *rights management*,
- and in some cases an increased *volume* of requests and demands of these services (e.g. instead of a researcher consulting one book, they request full-text of one million books).

Data types @ KBR

- Bibliographic data
- Heritage data
- Authority data
- Digital data
- Collections as data
- Born-digital data
- Electronic resources
- Research data
- Lab data (code)

Bibliographic Data

- information in the library catalog that describes a specific resource, e.g. descriptions of the analogue or digital objects in the collections

KBR 

General catalog

Collections ▾

Authors ▾

Title

Travels and travelogues in the Middle Ages

edited by Jean-François Kosta-Théfaine

Author(s)

[Kosta-Théfaine, Jean-François. Publishing director](#)

ISBN

978-0-404-64168-9

Imprint

New York : AMS Press, 2009

Publisher

[AMS Press](#)

Heritage Data

- information which describes in depth the broad range of types of heritage objects collected by KBR using international standards that cannot be described within the current bibliographic data framework



Type of objet

Médaille

Geographic area/pe...

Belgique

Date

1969

Ruler

Baudouin I

Artist

Somers, Francine (1923-).

Artist

Fisch (atelier).

Obverse: legend

[FS]

Obverse: description

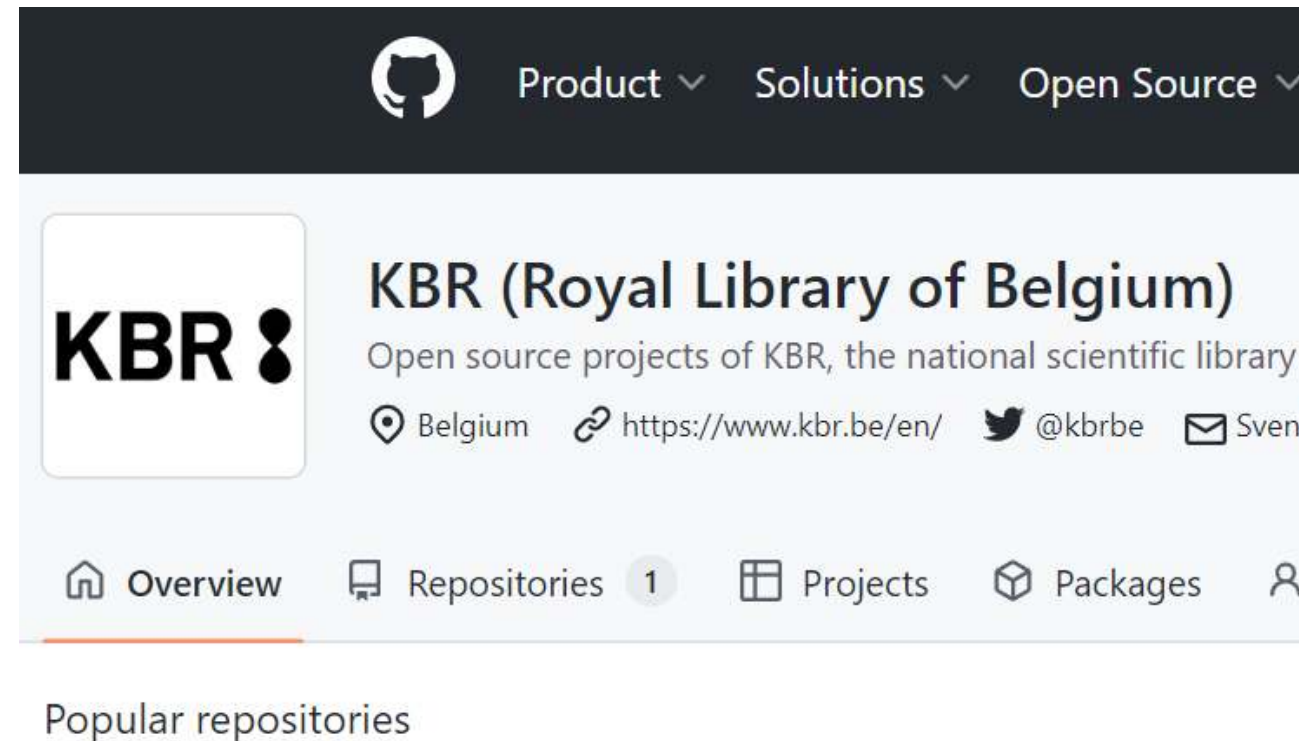
Tête de Pieter Bruegel presque de face

Reverse: legend


PIETER BRUEGEL / 1569 / 1969 / 050

Lab data

- **Openly available code, tools, tutorials, specifications, and examples for reproducible insights based on KBR-related data, and high-quality research data management**
- **<https://github.com/kbrbe>**



Product ▾ Solutions ▾ Open Source ▾

KBR 

KBR (Royal Library of Belgium)
Open source projects of KBR, the national scientific library

📍 Belgium 🔗 <https://www.kbr.be/en/> 🐦 @kbrbe ✉️ Sven

🏠 Overview 📁 Repositories **1** 📁 Projects 📦 Packages 👤

Popular repositories

Authority Data

- information derived from bibliographical data that specifies authority on names of people, places, things, and concepts in a standard format that can be shared with others



<https://www.kbr.be/en/isni/>



<https://www.kbr.be/en/projects/beltrans/>



<https://www.kbr.be/en/projects/camille/>

Digital Data

- information on digital files of resources (for records of digitization see meta-data)



Collections as Data

- information that reflects the machine readable contents of resources (e.g. full-text)

A screenshot of a file explorer window showing a list of files and folders. The window title is 'This PC > X09 D02 > Google Drive > Data'. The list includes folders like 'Favorites', 'Downloads', 'Documents', 'Pictures', 'Google Drive', 'www', and 'projquest'. The main area shows a list of files with columns for 'Name', 'Date modified', and 'Type'. The files listed include 'A Leisure Moment', 'Alpaca - Bunton Park', 'Anna Moore', 'Barnes Book Club', 'Bible', 'Bookmarked For Later', 'Books - A True Story', 'Catholicism Today', 'Chapter by Chapter', 'Constitutional Checkpoints', 'Corkinuggery', 'Dance of the Deer', 'Dan Pearce', 'Elin Fellen', 'Eyes, Stars & Stripes', 'Felix in Diner Interm.', 'Fire and Ice', 'Fit Body Fit Good', 'Foundation - Response Design Framework', 'Gone With the Wind', 'Graphics', 'Hampden-Mary Wood Obit', 'Hazel Obit-Mary', 'Holy Shona', 'JA Remondini', 'Jovanka Barbova', and 'Legacy Mobile Apps Business Cards'.

See also:

- <https://www.kbr.be/en/projects/data-kbr-be/>
- <https://www.kbr.be/en/projects/digital-research-lab/>
- <https://www.kbr.be/en/projects/data-science-lab/>

Born-digital

- **information and primary resources of documents that are inherently digital**

Web & Social
media archiving



Digital legal deposit



Laboratory for Electronic Literature (LabEL)



<https://www.kbr.be/en/projects/promise-project/>
<https://www.kbr.be/en/projects/besocial/>
<https://www.kbr.be/en/agenda/wanted-social-media-data/>

<https://www.depotlegal.be/>
<https://www.wettelijkdepot.be/>

<https://www.kbr.be/en/projects/laboratory-for-electronic-literature/>

eResources

- **resources that are available digitally, that we as KBR do not necessarily maintain as source (analoge) documents (e.g. databases, periodicals, e books)**

KBR offers several types of electronic resources, mainly in the field of human and social sciences. These external e-resources are purchased by KBR and are available, free of charge, to holders of a reader's card or an electronic resources subscription.

You have access to more than 120 databases, 5.500 e-journals and 65.000 e-books. The electronic resources are accessible via the online catalogue or via this overview:

DATABASES

E-BOOKS

E-JOURNALS



Research Data

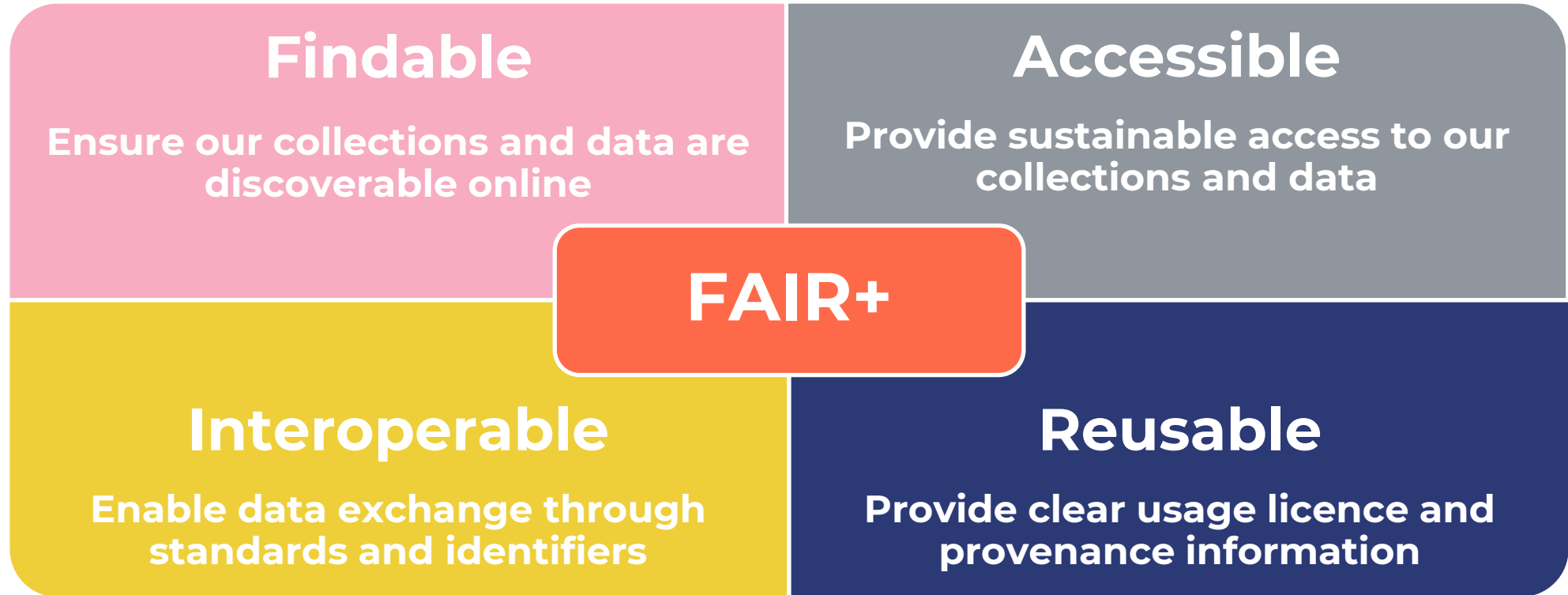
- **results that are derived from the collections, that can include records of the qualitative results - e.g. a dictionary or reference for a close reading; to quantitative findings, as well as the publications.**

Research data repository – SODHA

SODHA is a data archive for social sciences and digital humanities in Belgium as well as a service provider that is part of European Social Science Data Archives (CESSDA).

The aim of SODHA is to ensure the **conservation** of research data produced by social sciences and digital humanities. Researchers can **deposit** their datasets, which will be **preserved** in the long term and receive a **DOI**, making them discoverable. Using the search engine of the Dataverse software, researchers can **search the collections** of SODHA and find documents.

Objective: FAIR+ data



+ = Preservation

6 goals of the strategy

- Improve data **quality**
- Implement **sustainable** data management practices
- Improve the **findability** of data
- Improve the **accessibility** of data
- Improve the use of data by extending **data services**
- Improving **digital data literacy**.
 - Enhance digital data literacy through the organization to ensure the long term sustainability of the goals.

Three Priorities

We identify three aspects of our collections that will take priority in this first phase of the digital data strategy. These include:

- 1 - **Belgian collections** - e.g. Belgian authority files;
- 2 - **Unique collections**- collections that only KBR has, that are not necessarily Belgian, but are internationally unique or well-known;
- 3 - **Contextual collections** - collections related to exhibitions or events; AND collections that support the quality of research and authenticity of the two previous priorities - e.g. primary and secondary sources and e-resources.

In practice

KBR 

General catalog

Collections ▾

Authors ▾



Thank you !

Check out our research projects:

<https://www.kbr.be/en/research/>

Contact us if you are interested in cooperation!

Julie.Birkholz@kbr.be

